



**PIRNAR**

# PIVOT

E N T R A N C E



MAKE IT PERSONAL

# MAKE IT YOURS



**PIRNAR.**

PIRNAR'S

# HERITAGE

SINCE 1968

We take pride in our heritage. From our initial steps in the family workshop onward, we are driven by a passion for creation and a commitment to excellence in design and craftsmanship, which has been passed down through generations. We continuously enhance our expertise and combine it with modern technologies. Strong roots maintain our connection to tradition, while courage and boldness push the boundaries of possibility, guiding us to new successes. With a clear vision and an innovative approach, we exceed expectations and set new milestones globally in the realm of building furnishings.



PIRNAR

# PIVOT

A FREEDOM OF DESIGN &  
ARCHITECTURAL EXPRESSION

The Pirnar Pivot entrance line redefines the concept of entryways, melding innovation with elegance to create an unparalleled opening experience. Distinguished as the only pivot doors featuring unique carbon construction CarbonCore, these masterpieces offer remarkable strength, superior sealing Magnet WeatherSeal, and exceptional stability, ensuring outstanding performance in any climate or geographical location.

Offering extraordinary durability and dimensions, Pirnar Pivot presents a canvas for personalization, allowing the unique styles of homeowners to come to life. The elegant rotation of the door around the vertical axis not only enhances the exterior but also sets a captivating tone for the home's interior.

Enhancements like SmartLux ambient lighting create inviting atmospheres, while advanced control options, including the SecuroSmart finger scanner and SecuroSmart Keypad via the Pirnar mobile app, provide modern convenience and security.

**TAILOR-MADE  
ENTRANCES**  
BASED ON INSPIRATIONAL  
MODELS

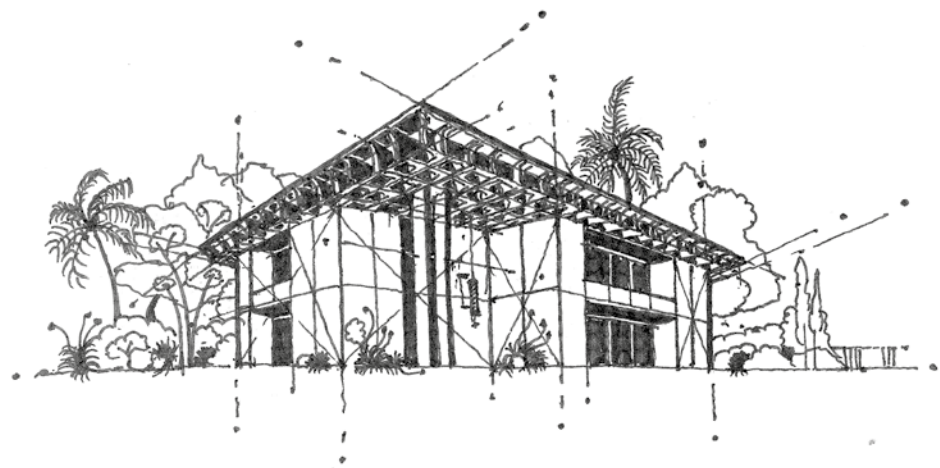
The pivot entrances are meticulously crafted to suit any environment or climate, drawing inspiration from a variety of models we develop daily. Each foundational design features standard horizontal divisions within the door leaf. Furthermore, each model can be enhanced with diverse dimensions and combinations of materials, colours, or cutting-edge accessories.



INSPIRATION

# ANOKHI

*Emerald coastlines* KISS  
SHORES OF *golden sand*, WHERE  
ANCIENT TEMPLES WHISPER TALES OF THE  
GLORIOUS PAST. *Modern villas*  
NESTLED AMONG SWAYING PALMS BLEND  
*luxury* WITH THE VIBRANT PULSE OF  
*timeless spirit.*





MODEL

**P\_01**

EXTERIOR

P\_01



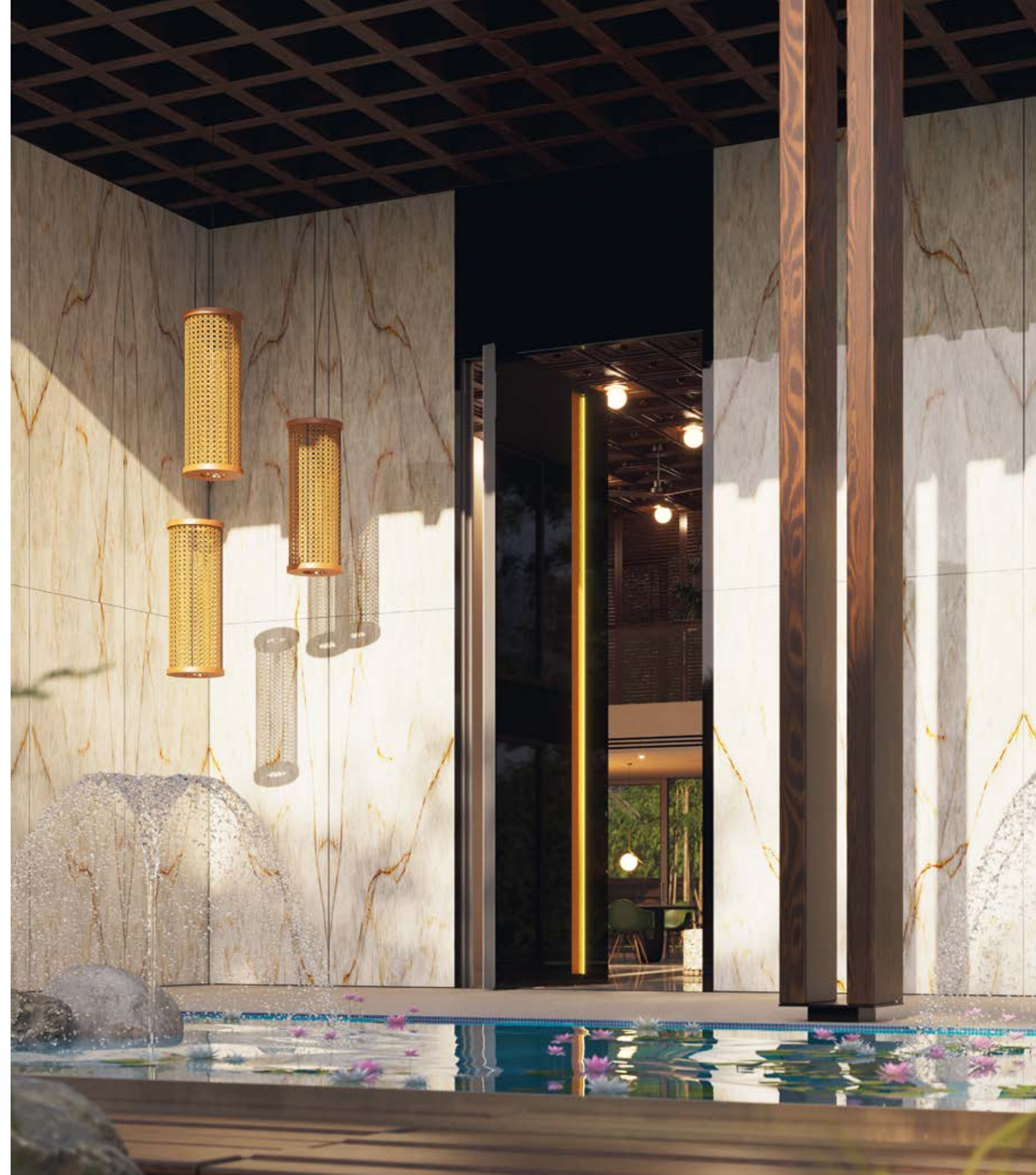
BASE MODEL INSPIRATION\*

**Dimension** 2200 x 5100 mm / **Materials** Decorative tempered glass Night Sky Gloss / Aluminium Dune colour RAL 1017 Saffron Smooth (inside the handle) / **Recessed handle** GRIP 9633 with SmartLux illumination / **SecuroSmart** finger scanner with locking system OMNILOCK / **PVD** Golden Honey

HORIZONTAL DIVISIONS

Up to a height of 3000 mm without divisions /  
From 3001 to 3800 mm with divisions at 2300 mm /  
From 3801 mm also with divisions at 3040 mm

\*For detailed technical information, please contact our sales representative.



SELECTED MODEL INSPIRATIONS



**Dimension** 2345 x 6000 mm / **Materials** Sintered Stone Abu Dhabi White / Decorative tempered glass Night Storm Gloss (inside the handle) / **Recessed handle** GRIP 9633 with SmartLux illumination / **SecuroSmart** finger scanner with locking system OMNILOCK / **PVD** Volcanic Shadow



**Dimension** 1500 x 3200 mm / **Materials** Aluminium FS 9016 / Sintered Stone Black Obsession (inside the handle) / **Recessed handle** GRIP 9633 with SmartLux illumination / **SecuroSmart** finger scanner with locking system ARMO COMFORT ELECTRO / **PVD** Volcanic Shadow



**Dimension** 2200 x 2500 mm / **Materials** Decorative tempered glass African Mystery mat / Aluminium Decor Oiled Oak (inside the handle) / **Recessed handle** GRIP 9633 with SmartLux illumination / **SecuroSmart** finger scanner with locking system ARMO COMFORT ELECTRO / **PVD** Volcanic Shadow

PIRNAR PIVOT

INTERIOR

P\_01



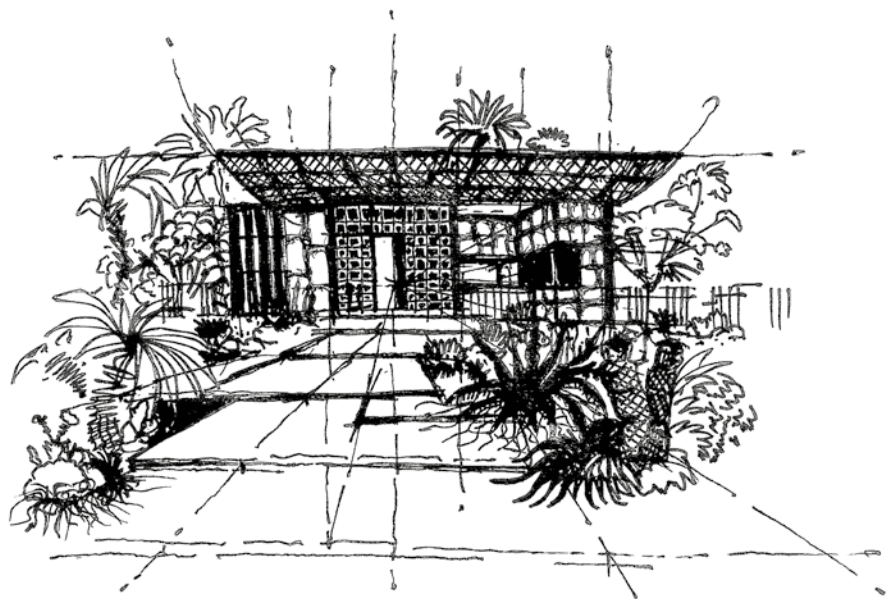
**INTERIOR INSPIRATION**

**Materials** Sintered Stone Iron Frost / Decorative tempered glass Night Sky Gloss / **Handle** ANGULAR ALTUM with SmartLux illumination / **PVD** Golden Honey (button & cylinder base FS 9005)



INSPIRATION  
**NOOR**

HERE GOLDEN SANDS KISS THE CERULEAN  
SEA, AND *luxury drapes*  
EVERY CORNER IN A TAPESTRY WOVEN  
FROM *dreams and daring*  
*ambition.*





MODEL

**P\_02**

EXTERIOR

P\_02



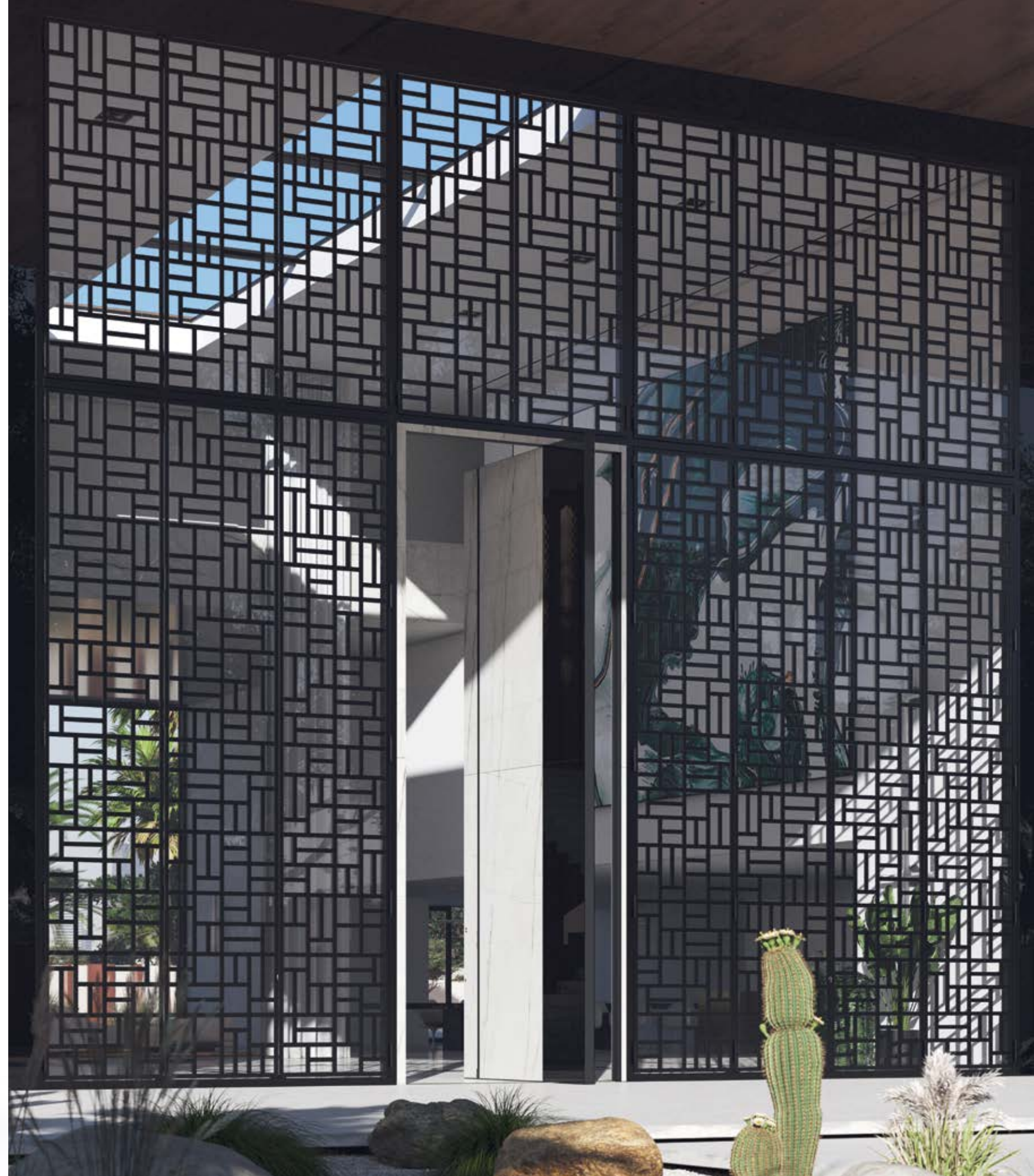
BASE MODEL INSPIRATION\*

**Dimension** 2400 x 6000 mm / **Materials** Sintered Stone Mont Blanc / Decorative tempered glass Night Sky Gloss / Colour FS 9005 inside the handle / **Recessed handle** GRIP 9634 with SmartLux illumination / **SecuroSmart** finger scanner with locking system OMNIOLOCK / **PVD** Volcanic Shadow

HORIZONTAL DIVISIONS

Up to a height of 3000 mm without divisions / From 3001 to 3600 mm - 600 mm from the top / Above 3601 mm at a height of 2960 mm

\*For detailed technical information, please contact our sales representative.



SELECTED MODEL INSPIRATIONS



**Dimension** 2300 x 5000 mm / **Materials** Sintered Stone Mont Blanc / Aluminium colour 90147 / **Recessed handle** GRIP 9634 with SmartLux illumination / **SecuroSmart** finger scanner with locking system OMNIOLOCK / **PVD** Volcanic Shadow



**Dimension** 1600 x 3400 mm / **Materials** Aluminium Decor Oiled Oak / Decorative tempered glass Dark Grey Gloss with 5-layer glass Pinnar Grey II (black printed motif) / Colour FS 9005 inside the handle / **Recessed handle** GRIP 9637 with application and SmartLux illumination / **SecuroSmart** finger scanner with locking system OMNIOLOCK / **PVD** Volcanic Shadow



**Dimension** 2200 x 2500 mm / **Material** Aluminium FS 9016 / **Recessed handle** GRIP 9637 with application and SmartLux illumination / **SecuroSmart** finger scanner with locking system ARMO COMFORT ELECTRO / **PVD** Golden Honey

PIRNAR PIVOT

INTERIOR  
**P\_02**



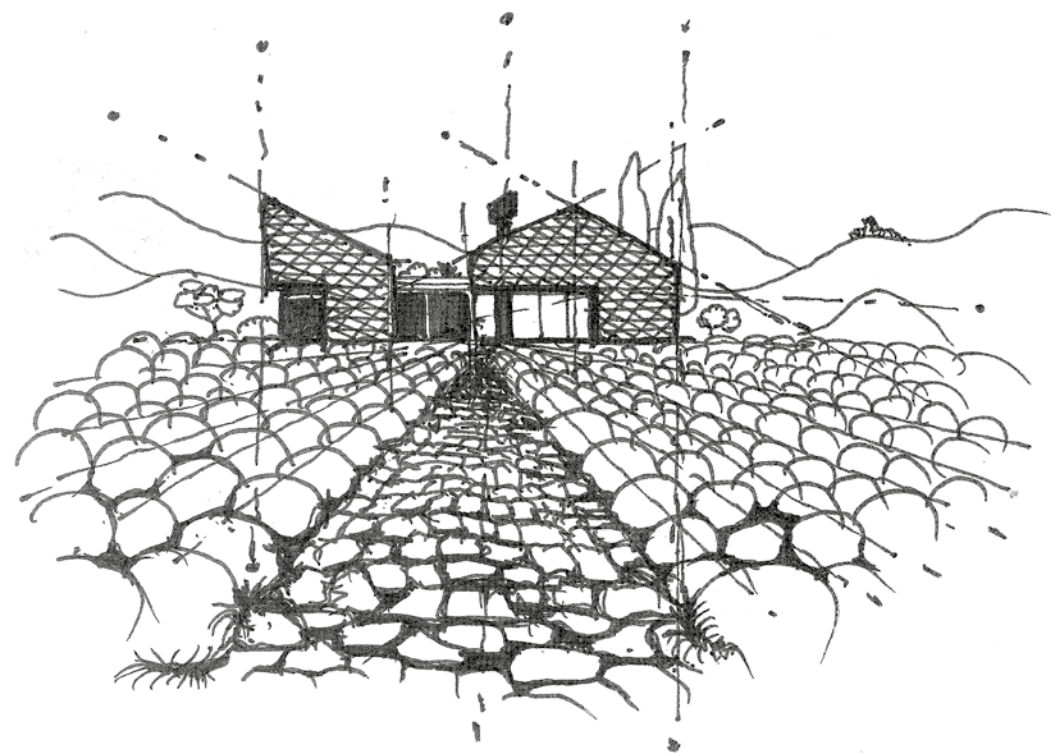
**INTERIOR INSPIRATION**

**Materials** Sintered Stone Mont Blanc / Decorative tempered glass  
Night Sky Gloss / **Handle** ANGULAR ALTUM with SmartLux illumination /  
**PVD** Golden Honey (button & cylinder base FS 9005)



INSPIRATION  
**CHIARA**

SUN-DRENCHED HILLS CRADLE *elegant villas*, WHERE TERRACOTTA ROOFTOPS AND *modern luxury* DANCE WITH *timeless charm*. CYPRESS TREES AND GROVES WEAVE A *tapestry of life*, INVITING THE SOUL TO LINGER IN THE *beauty of existence*.





MODEL

**P\_03**

PIRNAR PIVOT

EXTERIOR

P\_03



**BASE MODEL INSPIRATION\***

**Dimension** 2200 x 2800 mm / **Materials** Sintered Stone Abu Dhabi White / Decorative tempered glass Dark Grey Gloss with 5-layer glass Pinar Grey II (black printed motif) / LABELUX **handle** 9209 with SmartLux illumination / **SecuroSmart** finger scanner with locking system ARMO COMFORT ELECTRO / **PVD** Copper DusK

**HORIZONTAL DIVISIONS**

Up to a height of 3000 mm without divisions /  
From 3001 to 3800 mm with divisions at 2300 mm /  
From 3801 mm also with divisions at 3040 mm

*\*For detailed technical information, please contact our sales representative.*

**SELECTED MODEL INSPIRATIONS**



**Dimension** 2400 x 6000 mm / **Materials** Sintered Stone Zaha Stone / Aluminium FS 9005 (frame) / **Handle** OneTouch 9623 with SmartLux illumination / **SecuroSmart** finger scanner with locking system OMNIOLOCK / **PVD** Volcanic Shadow



**Dimension** 2400 x 5000 mm / **Material** Aluminium FS 9016 / **Handle** ANGULAR ALTUM with SmartLux illumination / Vertical Application / **SecuroSmart** finger scanner with locking system OMNIOLOCK / **PVD** Golden Honey



**Dimension** 1500 x 3400 mm / **Materials** Sintered Stone Iron Corten / Aluminium FS 7016 (frame) / **Double handle** ANGULAR 180 with SmartLux illumination / **SecuroSmart** finger scanner with locking system OMNIOLOCK / **PVD** Volcanic Shadow

PIRNAR PIVOT

INTERIOR  
**P\_03**



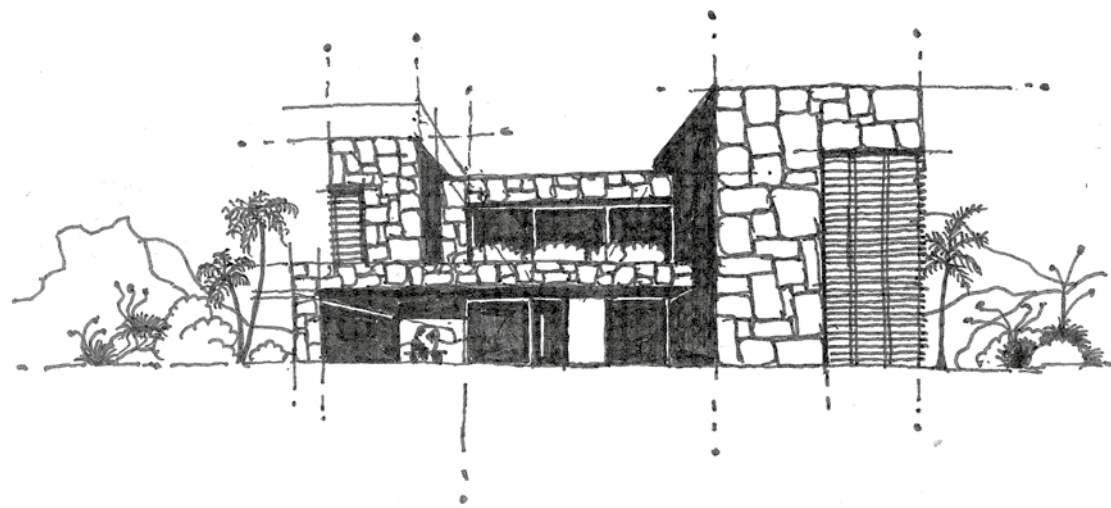
**INTERIOR INSPIRATION**

**Materials** Sintered Stone Arena / Aluminium colour FS 9005 / 5-layer glass  
Pirnar Grey II / **Handle** Magnifica / **PVD** Copper Dusk (button & cylinder  
base FS 9005)



INSPIRATION  
**OLIVIA**

IN THE SUN-DRENCHED LANDSCAPE,  
*vibrant blooms* AND LUSH  
GREENERY FILL THE AIR WITH FRAGRANCE,  
*softly caressing the shores*  
WHERE *land serenades*  
*the sea.*





MODEL

**P\_04**

EXTERIOR

P\_04



BASE MODEL INSPIRATION\*

**Dimension** 2400 x 2600 mm / **Materials** Sintered Stone Fusion Rapolano / Decorative tempered glass Night Sky Gloss / **Handle** OneTouch 9623 with SmartLux illumination / **SecuroSmart** finger scanner with locking system ARMO COMFORT ELECTRO / **PVD** Volcanic Shadow

HORIZONTAL DIVISIONS

Up to a height of 3000 mm without divisions /  
From 3001 to 3800 mm with divisions at 2300 mm /  
From 3801 mm also with divisions at 3040 mm

*\*For detailed technical information, please contact our sales representative.*



SELECTED MODEL INSPIRATIONS



**Dimension** 2400 x 5410 mm / **Materials** Aluminium FS 9016 / Sintered Stone Calacatta Luxe / **Handle** ANGULAR ALTUM with SmartLux illumination / Vertical Application / **SecuroSmart** finger scanner with locking system OMNIOLOCK / **PVD** Volcanic Shadow



**Dimension** 2200 x 2500 mm / **Material** Decorative tempered glass Dark Grey Gloss with 5-layer glass Pinnar Grey II (black printed motif) / LABELUX **handle** 9209 with SmartLux illumination / **SecuroSmart** finger scanner with locking system ARMO COMFORT ELECTRO / **PVD** Copper Dusk



**Dimension** 1500 x 3200 mm / **Materials** Aluminium FS 9016 / Aluminium Dune FS Quartz 2 / **Double handle** ANGULAR 170 with SmartLux illumination / **SecuroSmart** finger scanner with locking system OMNIOLOCK / **PVD** Volcanic Shadow

PIRNAR PIVOT

INTERIOR  
**P\_04**



**INTERIOR INSPIRATION**

**Material** Aluminium with Dune colour FS 9016 / Secondary Colour FS Quartz 2 (frame) / **Handle** Magnifica / **PVD** Volcanic Shadow (button & cylinder base FS 9016)



INSPIRATION  
**CHLOÉ**

WHERE LAVENDER FIELDS MEET  
*palatial elegance* AND THE  
SCENT OF CITRUS DANCES IN THE  
BREEZE, *luxury unfolds* LIKE  
A VIBRANT TAPESTRY, WOVEN WITH  
*whispers of elegance,*  
*glamour,* AND *timeless*  
*allure.*



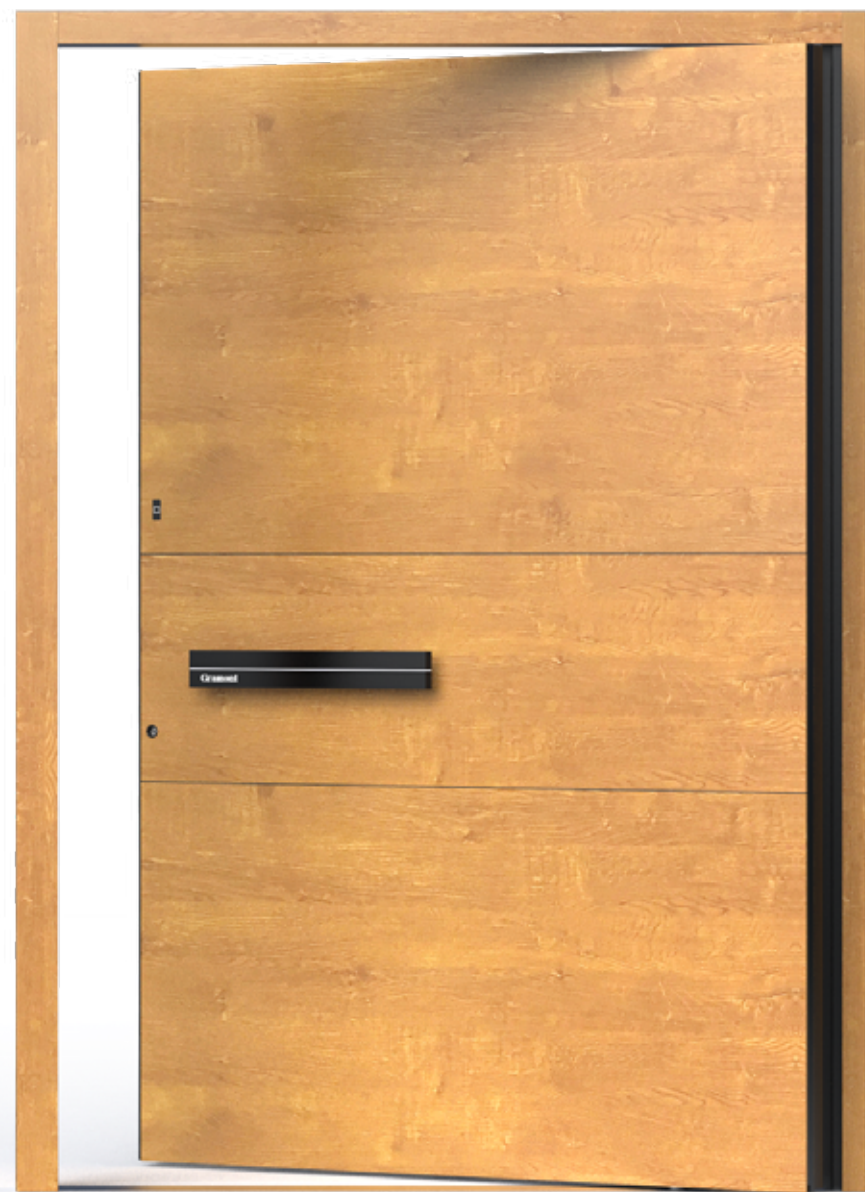


MODEL

**P\_05**

EXTERIOR

P\_05



**BASE MODEL INSPIRATION\***

**Dimension** 1800 x 2500 mm / **Material** Aluminium Wood imitation Oiled Oak decor / **LABELUX handle** 9209 with SmartLux illumination / **SecuroSmart** finger scanner with locking system ARMO COMFORT ELECTRO / **PVD** Volcanic Shadow

**HORIZONTAL DIVISIONS**

The first and second divisions from the bottom always at fixed heights of 850 mm and 1360 mm / Up to a door height of 2800 mm, without divisions / Above 2801 mm, divisions are at fixed heights of 850 mm / The top panel must not be smaller than 425 mm

*\*For detailed technical information, please contact our sales representative.*

**SELECTED MODEL INSPIRATIONS**



**Dimension** 2400 x 6000 mm / **Materials** Sintered Stone Rapalano / Decorative tempered glass Night Sky Gloss / **Double handle** ANGULAR 180 with SmartLux illumination / **SecuroSmart** finger scanner with locking system OMNILOCK / **PVD** Volcanic Shadow



**Dimension** 2400 x 5000 mm / **Material** Sintered Stone Calacatta Gold / **Handle** ANGULAR 115 with SmartLux illumination / Horizontal Application (2x) / **SecuroSmart** finger scanner with locking system OMNILOCK / **PVD** Mystic Bronze



**Dimension** 1500 x 3600 mm / **Materials** Decorative tempered glass Night Sky Gloss / Aluminium Concrete imitation Decor / **LABELUX handle** 9209 with SmartLux illumination / **SecuroSmart** finger scanner with locking system OMNILOCK / **PVD** Volcanic Shadow

PIRNAR PIVOT

INTERIOR  
**P\_05**



**INTERIOR INSPIRATION**

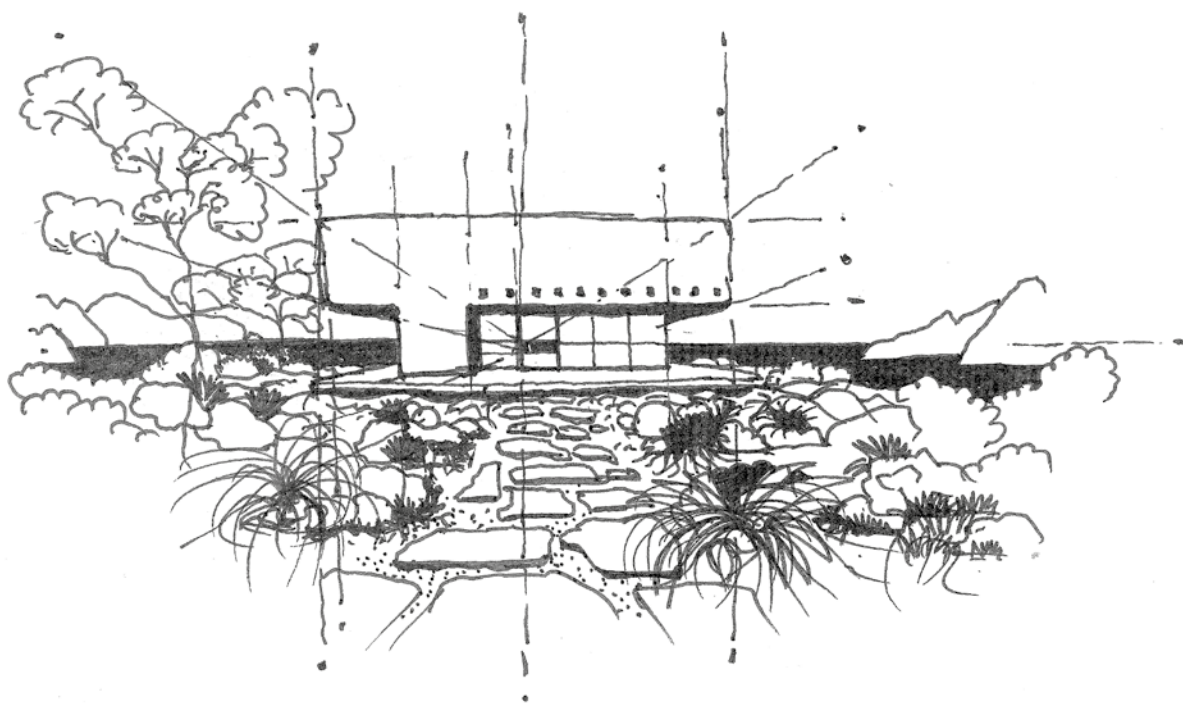
**Material** Aluminium Wood imitation Oiled Oak decor / **Handle** Magnifica / **PVD** Volcanic Shadow (button & cylinder base FS 9005)



INSPIRATION

# MAR

IN A SUNLIT REALM *elegance*  
*dances* UPON THE WAVES AND  
REFLECTS THE *shimmering*  
*embrace of the sea.* THE  
STEEP COAST LINE RISES NOBLY IN THE  
BACKGROUND, FRAMING THE *exquisite*  
*tableau* WHERE WATER AND PEAKS  
CONVERGE, *whispering tales of*  
*grandeur* IN EACH  
GENTLE CREST.





MODEL

**P\_06**

EXTERIOR

P\_06



BASE MODEL INSPIRATION\*

**Dimension** 2200 x 2600 mm / **Material** Aluminium colour FS 8019 / Secondary colour FS Quartz 2 / **Recessed Handle** GRIP 9635 with SmartLux illumination / **SecuroSmart** finger scanner with locking system ARMO COMFORT ELECTRO / **PVD** Golden Honey

HORIZONTAL DIVISIONS

Two fixed points at the bottom, depending on the height of the door or handle.  
Above the handle, evenly dynamic: Up to a door height of 2800 mm, no divisions /  
From 2801 mm to 3500 mm, one division /  
From 3501 mm to 4800 mm, two divisions /  
For heights above 4801 mm, three divisions

\*For detailed technical information, please contact our sales representative.



SELECTED MODEL INSPIRATIONS



**Dimension** 2400 x 6000 mm / **Materials** Sintered Stone Calacatta Roma / Aluminium FS 7016 / **Recessed Handle** GRIP 9636 with SmartLux illumination / **SecuroSmart** finger scanner with locking system OMNILOCK / **PVD** Golden Honey



**Dimension** 2400 x 4400 mm / **Materials** Decorative tempered glass Night Sky Gloss / Aluminium FS Quartz 2 / **Recessed Handle** GRIP 9636 with SmartLux illumination / **SecuroSmart** finger scanner with locking system OMNILOCK / **PVD** Volcanic Shadow



**Dimension** 1500 x 3300 mm / **Material** Aluminium 70105 / Secondary Colour 70161 / **Recessed Handle** GRIP 9635 with SmartLux illumination / **SecuroSmart** finger scanner with locking system OMNILOCK / **PVD** Volcanic Shadow

PIRNAR PIVOT

INTERIOR  
**P\_06**



**INTERIOR INSPIRATION**

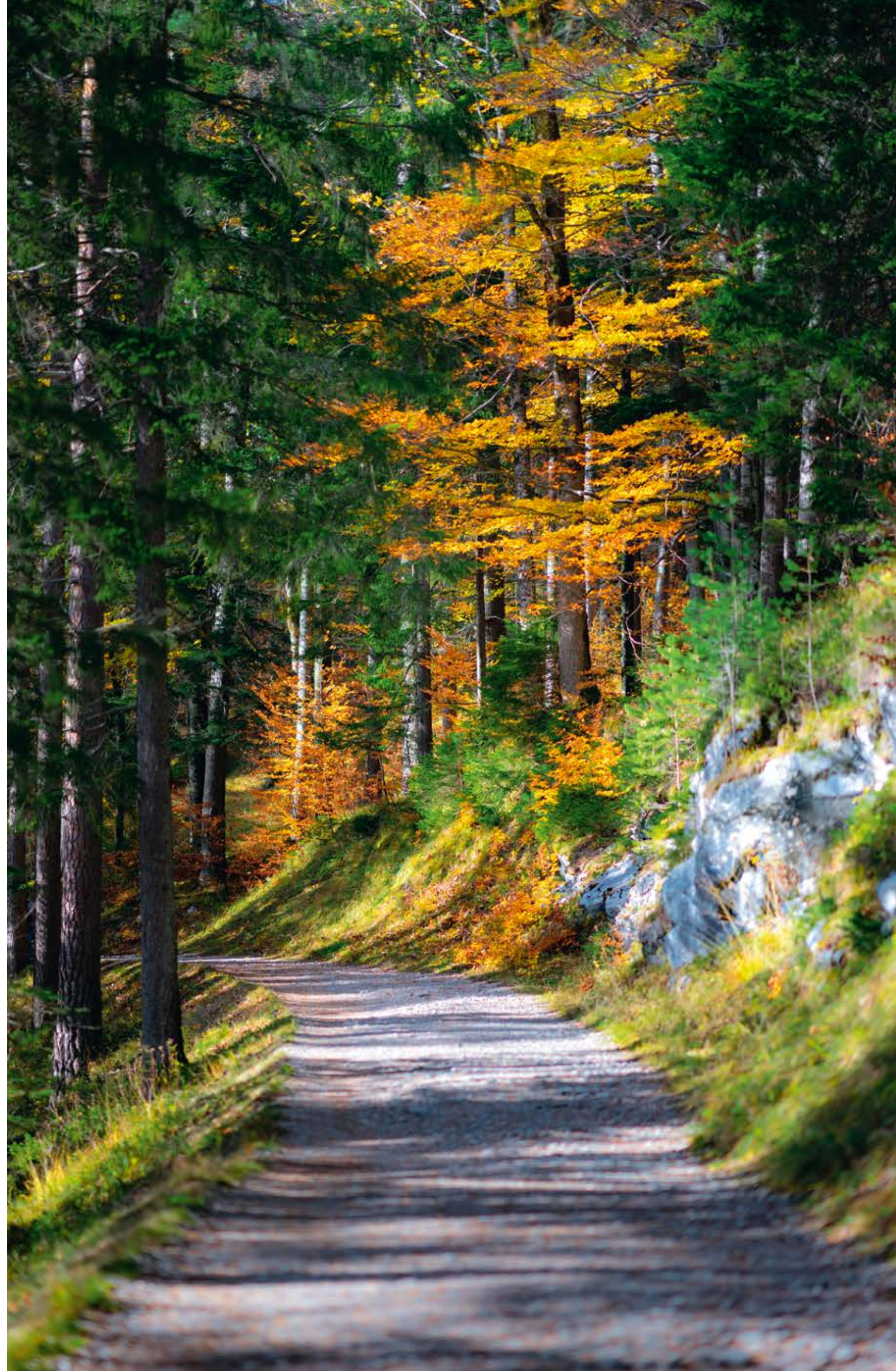
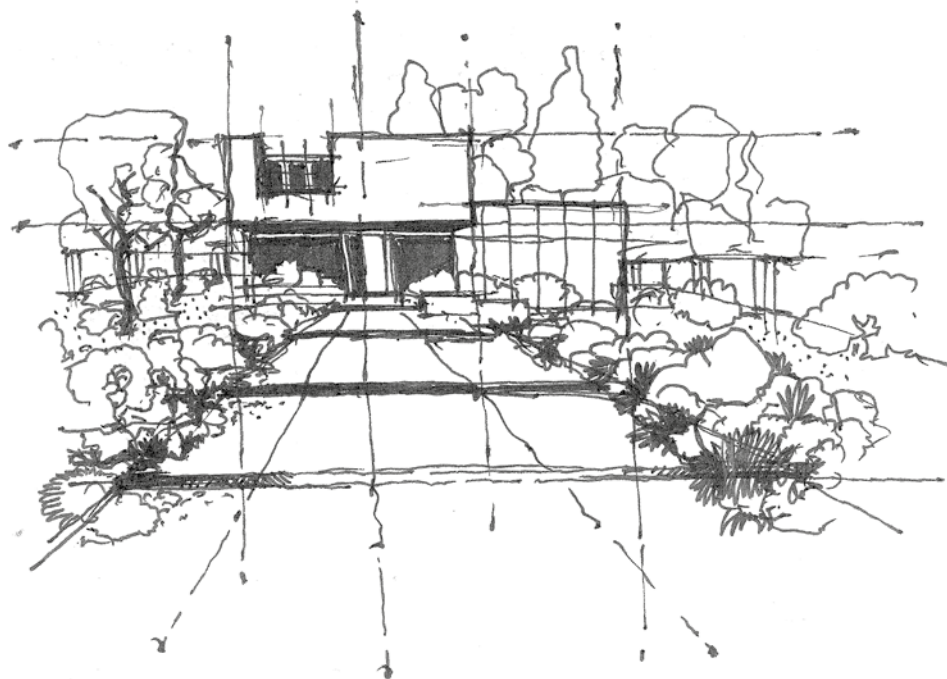
**Material** Aluminium colour FS 5003 / Secondary Colour  
FS Quartz 1 / **Handle** Magnifica / Horizontal Application (2x) /  
**PVD** Golden Honey (button & cylinder base FS 5003)



INSPIRATION

# LORELAI

NESTLED IN LUSH WOODLANDS,  
TRADITION HARMONIZES WITH *modern  
elegance*. AS THE DAY UNFOLDS,  
*serene forests*, WEAVING  
SEAMLESSLY WITH *timber and  
stone*, REFLECT A SENSE OF *peace  
and quiet* CONTEMPLATION.





MODEL

**P\_07**

EXTERIOR

P\_07



BASE MODEL INSPIRATION\*

**Dimension** 1800 x 2800 mm / **Materials** Decorative tempered glass Night Sky Gloss / Aluminium Dune colour FS 9005 / Vertical application (2x) / **Handle** ANGULAR ALTUM with SmartLux illumination / **SecuroSmart** finger scanner with locking system ARMO COMFORT ELECTRO / **PVD** Golden Honey

HORIZONTAL DIVISION

Up to a height of 3000 mm without divisions /  
From 3001 to 3600 mm - 600 mm from the top /  
Above 3601 mm at a height of 2960 mm

*\*For detailed technical information, please contact our sales representative.*



SELECTED MODEL INSPIRATIONS



**Dimension** 2400 x 5920 mm / **Materials** Decorative tempered glass Night Sky Gloss / Aluminium Dune FS Quartz 2 / **Handle** ANGULAR ALTUM with SmartLux illumination / **SecuroSmart** finger scanner with locking system OMNIOLOCK / **PVD** Volcanic Shadow



**Dimension** 2400 x 3100 mm / **Materials** Sintered Stone Black Obsession / Decorative tempered glass Dark Grey with 5-layer glass Pinnar Grey II (black printed motif) / Vertical Application (2x) / **Handle** ANGULAR ALTUM with SmartLux illumination / **SecuroSmart** finger scanner with locking system OMNIOLOCK / **PVD** Copper Dusk



**Dimension** 2200 x 4500 mm / **Material** Aluminium Concrete imitation Decor / Vertical Application (2x) / **Handle** ANGULAR ALTUM with SmartLux illumination / **SecuroSmart** finger scanner with locking system OMNIOLOCK / **PVD** Mystic Bronze

PIRNAR PIVOT

INTERIOR  
**P\_07**



**INTERIOR INSPIRATION**

**Material** Aluminium Concrete imitation Decor / Decorative tempered glass Night Sky Gloss / Vertical application (2x) / **Handle** Magnifica / **PVD** Golden Honey (button & cylinder base FS 9005)



UNIQUE  
CARBON CONSTRUCTION

# CARBONCORE

A DOOR THAT SEALS  
LIKE A WALL

CarbonCore is a unique carbon construction made exclusively for entrance doors. Carbon fibre is extremely lightweight, rigid and several times stronger than steel. CarbonCore profiles minimize door warping in extreme temperatures, whether it's scorching heat or freezing cold. This innovative construction enables advanced design and technological solutions for Pirnar's entrance doors.



*Door-frame thickness:	129 mm
*Door-leaf thickness:	129 mm
Thermal glazing:	5-layer tempered

*\*Applies to the basic model, featuring a 4 mm exterior and 2,5 mm interior overlay thickness.  
The maximum total thickness is 135 mm (with 6 mm overlays on both the exterior and interior sides).*



## EXCEPTIONAL DIMENSIONS

Boasting extraordinary dimensions, Pirnar pivot doors span widths from 1350 mm to an astonishing 2400 mm and heights from 1990 mm to an impressive 6000 mm making it suitable for any architectural style, climate and environment.



## LIMITLESS CUSTOM DESIGN

A breathtaking opening design that creates a sense of floating, enhancing width and spatial perception. Boundless personalization options featuring an extensive selection of materials, surface finishes, handcrafted details, and distinctive handles. Customizable SmartLux Lighting to elevate your entrance, creating a stylish and practical ambiance.



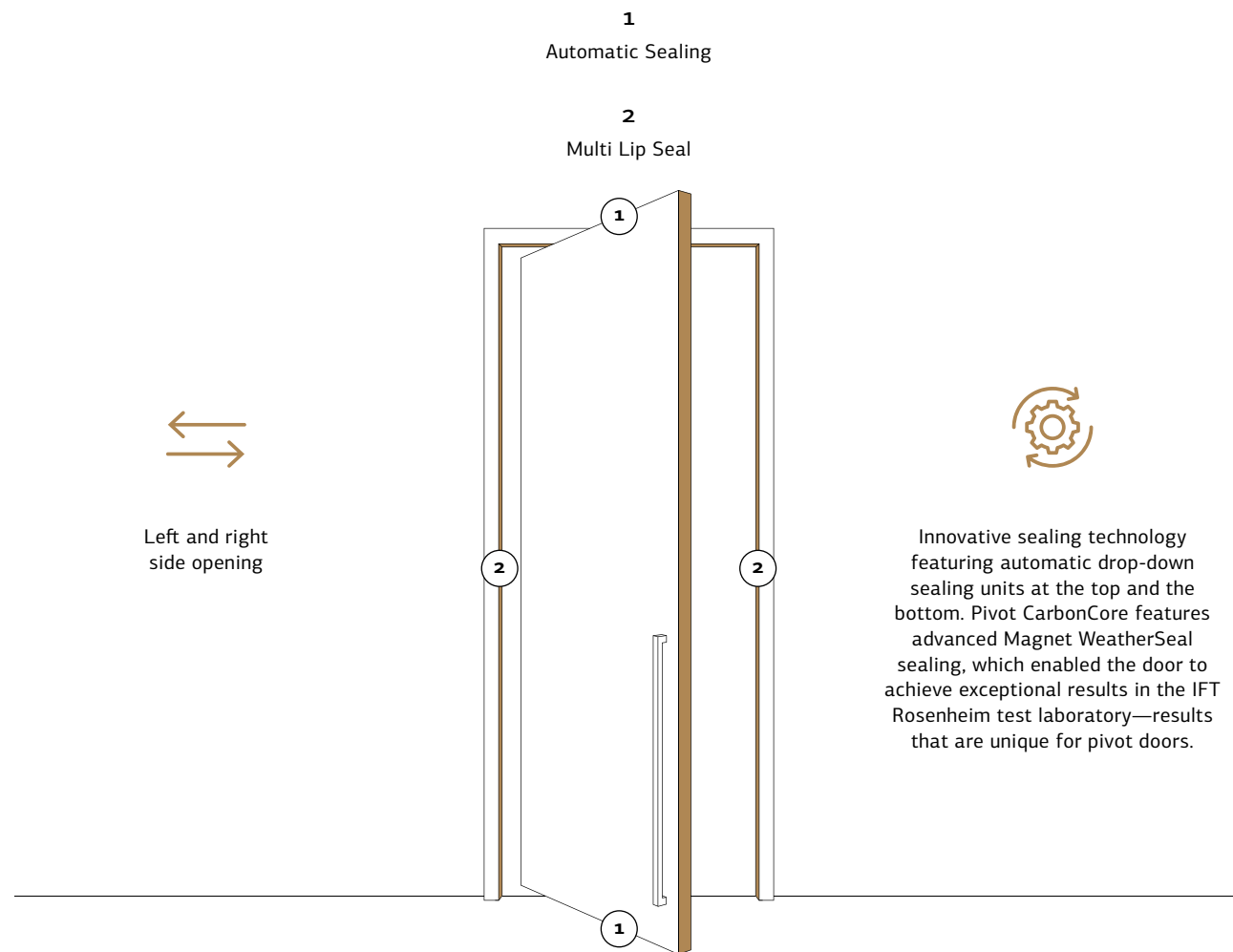
## RECORD THERMAL INSULATION

Thanks to the unique CarbonCore construction, Pirnar pivot doors deliver exceptional thermal performance. Meticulously designed to thrive in diverse climatic, weather, and demographic contexts.

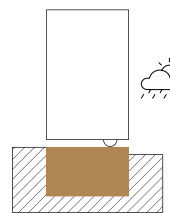
# UNMATCHED SEALING

ENGINEERED FOR OPTIMAL PERFORMANCE  
ACROSS ALL CLIMATES

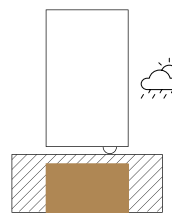
## FOUR-SIDE CONTINUOUS SEALING



## THRESHOLDS FOR VARIOUS CLIMATE CONDITIONS

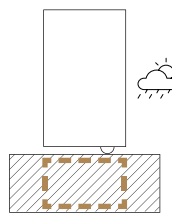


**Visible threshold profile.**  
Protection against diverse weather conditions and rainwater.



**Recessed threshold profile.\***  
Ideal for warmer climates.

\*Not available for the EU.



**No threshold profile.\***  
Continuous floor contact, ideal for warmer climates.

\*Not available for the EU.

### Unique sealing performance values\*

Water tightness class:	9A
Air tightness class:	4
Wind load resistance:	C3

\*Testing was conducted on pivot doors with a visible threshold up to a size of 2400 x 3150 mm.

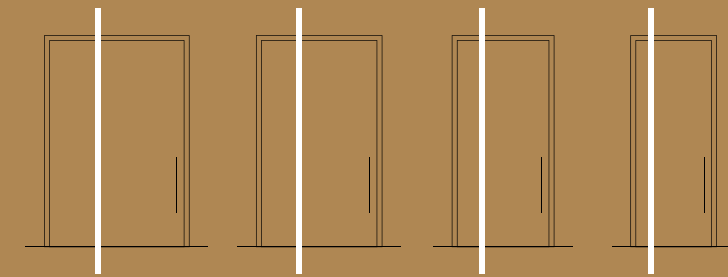
HIGH-PERFORMANCE

# HEAVY DUTY HINGES

PERFECT ADJUSTABILITY FOR ANY PIRNAR  
PIVOT DOOR

## FLEXIBLE POSITIONING

The minimum distance from the hinge to the edge of the element is 350 mm and depends on the weight and width of the door leaf. Upon request, the hinge can be positioned closer to the center of the door leaf.

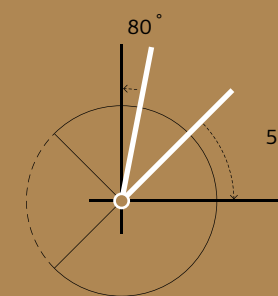


Pivoting points

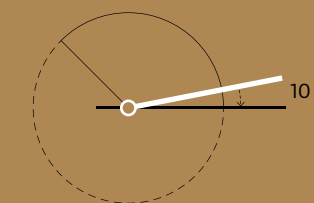
## FUNCTION & MOVEMENT

Pirnar pivot concealed hinges offer optimal control over every part of the door movement.

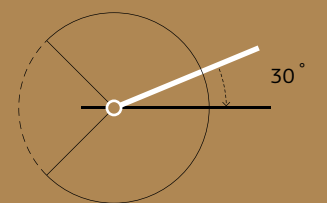
- Integrated self closing mechanism
- Integrated leaf hold position at 90°
- Adjustable speed, damper and latch control
- Adjustable leaf position up-down and left-right
- Maximal weight of door leaf up to 500 kg



Damper control



Latch control



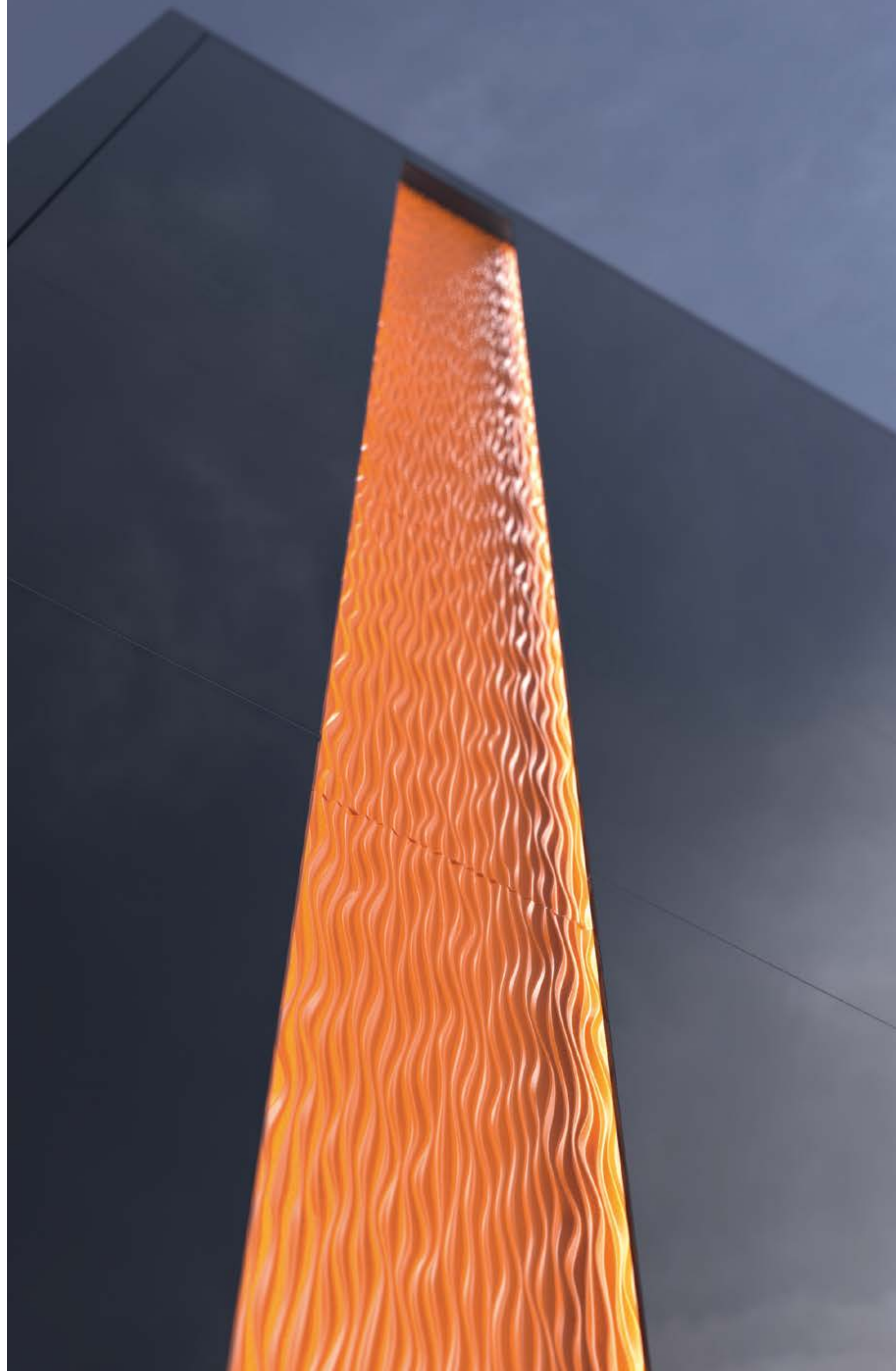
Function

LIMITLESS  
CUSTOMIZATION

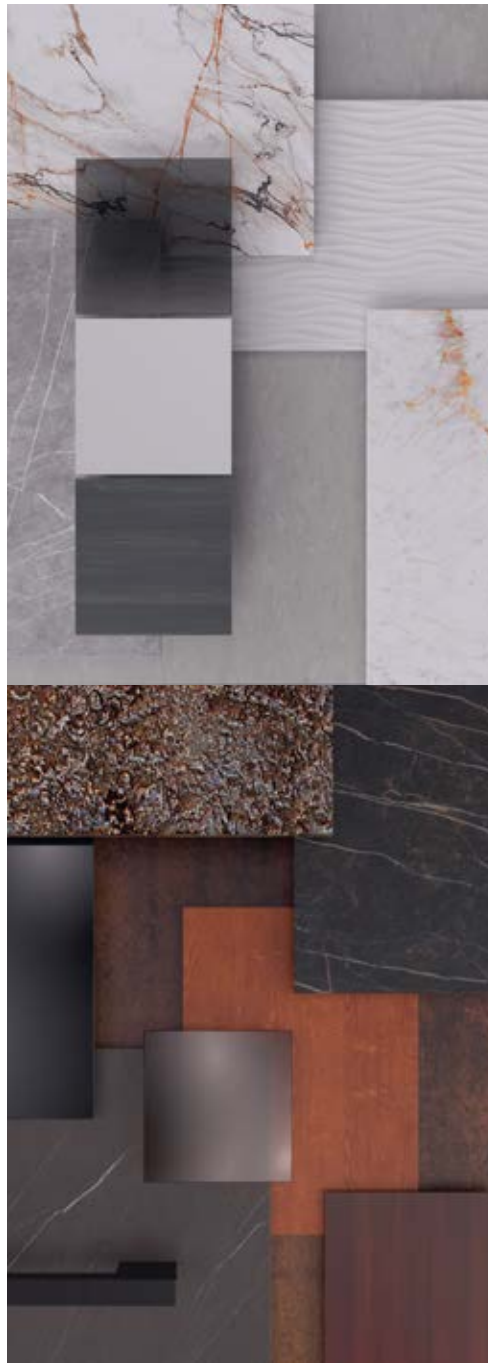
**MAKE IT  
PERSONAL.  
MAKE IT  
YOURS.**



Pirnar Pivot offers an extraordinary canvas for personalization, featuring limitless customization options that bring the distinctive styles of homeowners to life. With an extensive selection of materials, finishes, coatings, and innovative accessories, these doors are perfectly suited to complement any architectural style while adapting to diverse climates and environments.

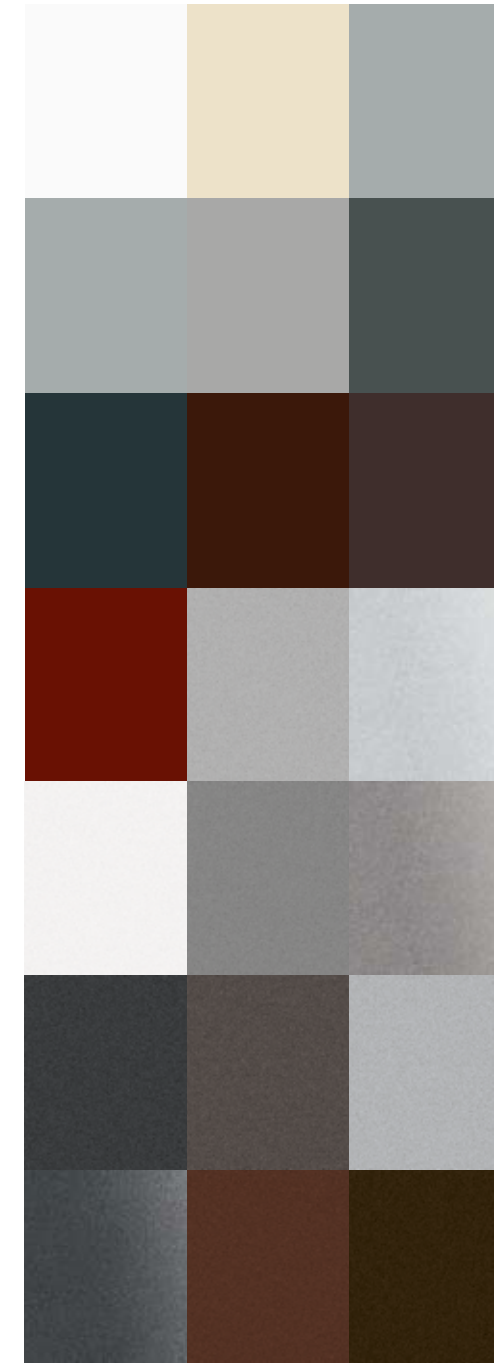


# MATERIALS



Pirnar pivot doors present an extensive array of premium materials, colours, wood decors and other imitations, providing limitless design possibilities for discerning homeowners.

# COLOURS



GET INSPIRED BY  
MATERIALS AND COLOURS

# LUXURIOUS PVD COATINGS

Inspired by the beauty of luxurious jewellery, you can enhance selected accessories with a unique PVD coating. In the opulence of gold, bronze, black, and copper shades, or in stainless steel execution, every detail becomes a synonym for refined personal style. Pinar's PVD technology is also characterized by greater resistance to scratches, stains, and wear, longer colour durability, and an extended product lifespan.



STAINLESS  
STEEL

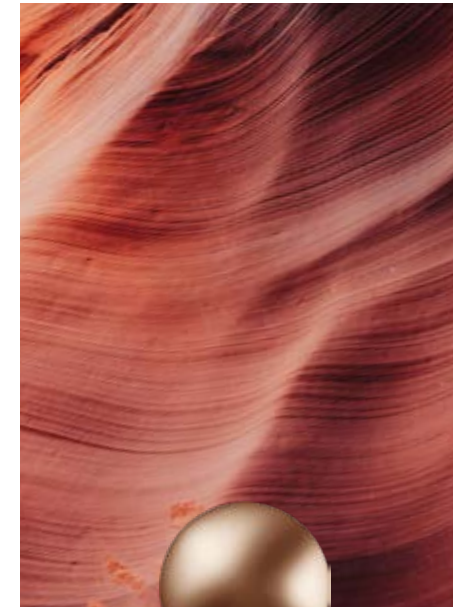
BASE



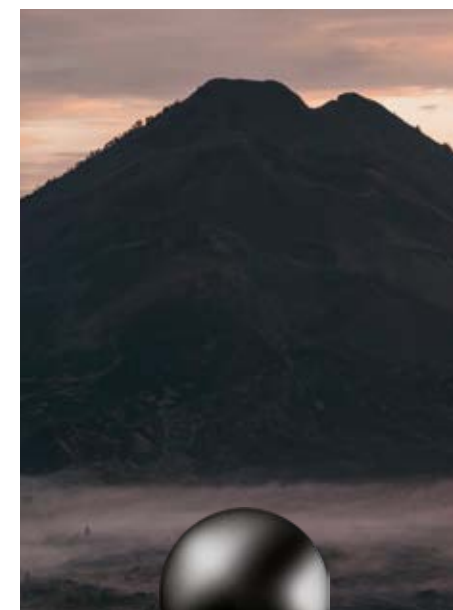
GOLDEN  
HONEY



COPPER  
DUSK



MYSTIC  
BRONZE



VOLCANIC  
SHADOW



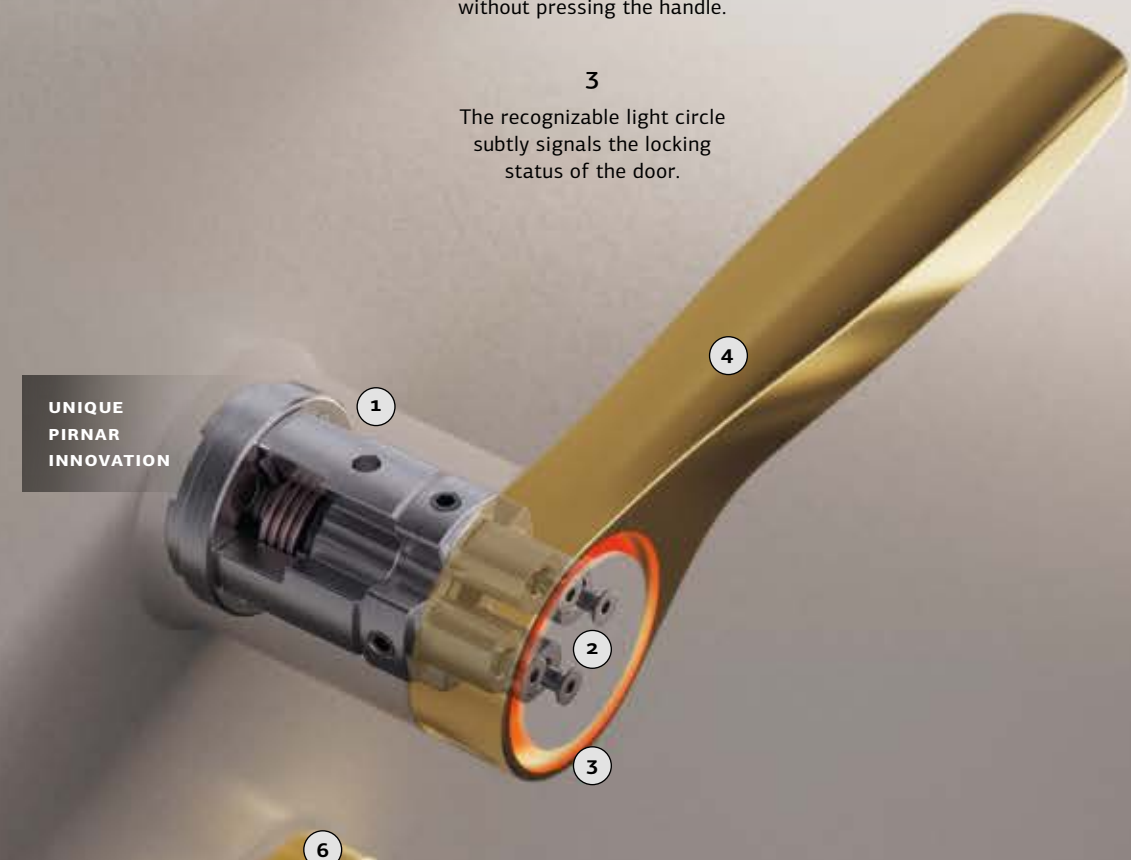


# THE FIRST TOUCH OF HOME MAGNIFICA

The stunning, internationally awarded interior handle is made of precision-cast stainless steel, ensuring its solidity and robustness. The refined ergonomic shape, inspired by the elegance of Pegasus' wing in flight, offers a light feeling of levity and a comfortable grip.



UNIQUE  
PIRNAR  
INNOVATION



**1**  
An exclusive unique mechanism that derives directly from the door ensures superior stability and extended lifespan.

**2**  
The button within the light circle allows for door opening without pressing the handle.

**3**  
The recognizable light circle subtly signals the locking status of the door.

**4**  
The appearance of the handle can be enhanced with various colour shades in PVD coating.

**5**  
**Locking the door:**  
the cylindrical button is pulled out and turned counterclockwise.

**6**  
**Unlocking the door:**  
the cylindrical button is pulled out and turned clockwise.



WATCH THE VIDEO  
ABOUT **MAGNIFICA**



# CREATING AMBIANCE WITH ELEGANT LIGHTING



Pirnar's solutions for creating a comfortable atmosphere facilitate the management of lighting for Pivot entrance doors at pull handles, lever handles or nameplate and is available only as a package. With the SmartLux system in the Pirnar mobile app, you can adjust the intensity, temperature, and timing of the lighting.

## EASE OF USE AND COMPATIBILITY WITH SMART HOME SOLUTIONS



Wi-Fi and Bluetooth connectivity



Remote management



Temperature control of led light intensity from 2700 Kelvin (warm white) to 6500 Kelvin (cool white)



Time setting for LED lighting



Voice control with integration of Google Assistant and Amazon Alexa

LIVE SMARTER AND SAFER

# COMPLETE SECURITY AND COMFORT

Pirnar offers state-of-the-art solutions and the finest products for complete security and comfort. You can unlock the entrance doors using the smart SecuroSmart system or the SecuroSmart Keypad in the Pirnar mobile app, as well as with a finger scanner, card, PIN code, Google Assistant or Alexa. Combined with the premium locking system Omnilock or Armo Comfort Electro, you will ensure that your home is a fortress of safety and peace.



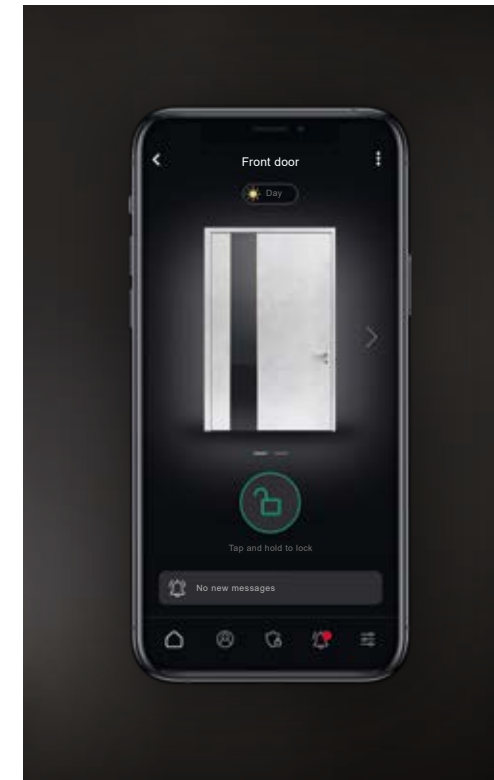
### FINGER SCANNER

This modern and popular method of unlocking doors with a finger scanner ensures enhanced security and, above all, a simpler and more comfortable entry for your entire family, as you can store fingerprints of multiple selected individuals simultaneously. Forget about keys and concerns.



### SECUROSMART KEYPAD

The modern keypad allows for unlocking with various PIN codes tailored to specific needs and unlocking with an NFC card. It features a finger scanner and integrated and wireless doorbell, managed via the Pirnar app.



### SMART MANAGEMENT SECUROSMART

The SecuroSmart system in the Pirnar mobile application boasts outstanding functionalities for easy and secure door usage. Even if you are on the other side of the world, you can conveniently unlock your doors.



### CONCEALED HINGES

Heavy-duty hinges represent an important security feature of Pirnar's pivot doors, celebrated for their remarkable strength and durability. Beyond their elegant design, these hinges remain inaccessible from the exterior, enhancing overall safety and integrity.



### 5-LAYER TEMPERED GLAZING

Featuring 6 mm tempered insulating glass, our 5-layer tempered glazing offers superior strength and security, ensuring enhanced protection while maintaining aesthetic elegance in every pivot door design.



### LOCKING SYSTEMS OMNIOLOCK AND ARMO COMFORT ELECTRO

Pirnar pivot doors feature state-of-the-art locking systems for security and convenience. Doors up to 3 m use the Armo Comfort Electro lock with motorized, keyless unlocking and automatic locking.

For doors above 3 m, the 3-point locking system OmniLock is available as an upgrade, with up to 6 locking points which are added based on door height. Both systems provide enhanced protection with burglary resistance class RC2\*, delivering superior safeguarding and peace of mind.

\*The RC2 package is standardly available for a solid door leaf, without insulating glass in the door leaf. For designs with insulating glass in the door leaf, the RC2 package is available as an additional option.



**DISCLAIMER**

Pirnar pivot door models are protected by copyright and remain the exclusive property of Pirnar. We reserve the right to modify prices, make design or dimensional adjustments, and implement minor technological improvements without prior notice, as part of our commitment to continuous product development.

Please note that catalogue images, dimensions, finishes, features (functions/options), and colours may differ from the final product due to printing limitations. For precise colour and material selection, we recommend consulting original colour samples or material swatches.

Pirnar is not responsible for the design, dimensioning, or installation of structural supports used when integrating doors into façade systems. We do not produce or supply the supporting framework (e.g. mullions, transoms, or structural grids) into which doors, sidelights, or other elements are mounted. Our responsibility is limited strictly to the entrance door itself.

Edition 01/2025



**PIRNAR.**

**Pirnar d.o.o.**  
Bravničarjeva ulica 20  
SI-1000 Ljubljana, Slovenia  
**T** +386 1 563 39 02  
**E** sales@pirnar.si  
www.pirnar.co.uk

